

# 1 Medical Lab (Mbl)

October 1968 to February 1970

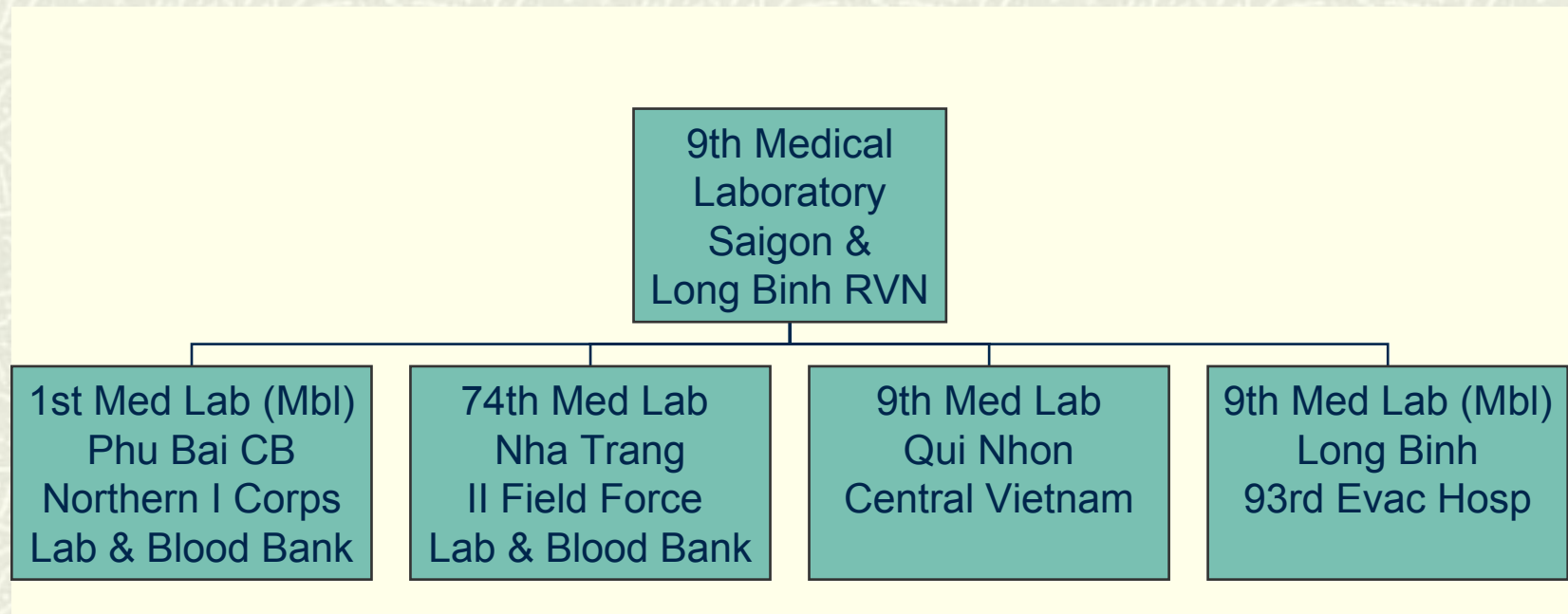
Phu Bai Combat Base  
Republic of Vietnam

USARV GO 4188



9 September 1970

# Where Were the Mobile Labs?





# Let's Focus on the 1<sup>st</sup> Med Lab Which Deployed in Mid 1968

CPT Jim  
Higbee  
loads the  
unit out at  
Ft. Meade



And...CPT Heltsley  
consults with Col Glenn  
West on arrival at 95<sup>th</sup>  
Evac Hosp Da Nang

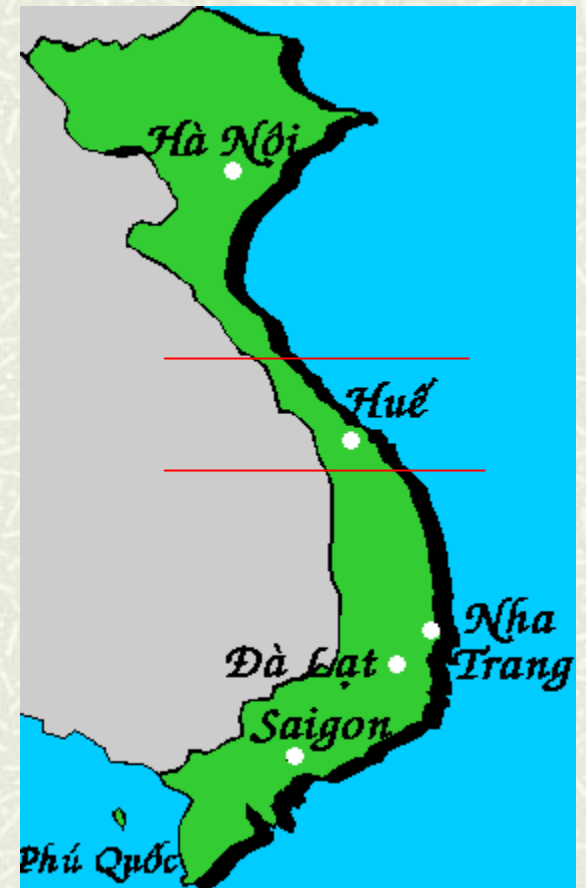


# Eventually arriving at Phu Bai





# Where Is Phu Bai You Say?



Area Of Northern I Corps



# In the USA Hospital (Prov) (later 85<sup>th</sup> Evac) Compound on QL-1





# To Wonderful Accommodations!



Hanger from west



Hanger Front



Initial Lab on Porch



Interior as work begins



# A Laboratory Was Created!



Jim Higbee in Bacteriology



Bill Crymes draws blood



Mike Alley in Chemistry



Bill in Parasitology



# While Around Us in Our Little Combat Base Were--



4<sup>th</sup> RRFS Hmmm!



QL1 Open Daily



101<sup>st</sup> Airborne Div





# Times Weren't Always Friendly



The mouth of the Ah Shah Valley was quite close

A VC rocket takes out a sea hut





# Living Was at Least Bearable



Sea huts for Sleeping



Burnout Latrines- Ahhh....



Take a shower



Shave!



# By Mid 1969 Things Were Looking Good



Above, MAJ Ballentine and MAJ Merritt (85<sup>th</sup> Evac) with ARVN Medical Staff at 1<sup>st</sup> ML

To the right

CPT Higbee MSC

MAJ Ballentine MC

CPT Heltsley MSC



Above Front 1 to r:  
Heltsley, Summerfield,  
Alley, ?

Back Row 1 to r: Higbee,  
?, Summerfield, McNulty,  
Primus and ?



# Time Was Available for MedCap



Hue Provincial Hospital



Pediatric Assistance



Catholic Orphanage Hue



Dong Da Trng Ctr



# Time To Humanize The Site



Sgt Knight set out to provide some area cleanup and in return he created a pond with Ducks.

MCB10 US Navy were kind enough to pave our driveway and parking lot to reduce mud in the lab



# And What Unit Is Complete Without A.....



TINA our guard dog and mascot!



# She Was Loved By Everyone

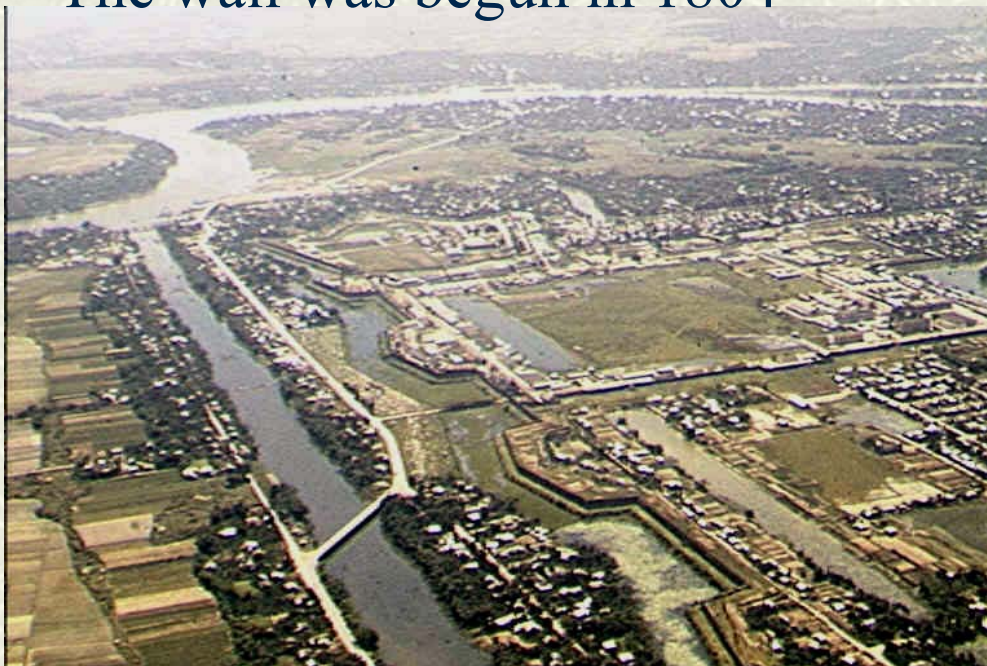


Asao Kamei, Hematology and Major Iber on a late night cross match check but she hated female nurses.



# By March 1970 a Visit to Hue Was Possible for Pleasure

The Citadel of the Imperial City of Hue dates back many centuries. The wall was begun in 1804



Thien Mu Pagoda



The Perfume River



# Who Did The 1<sup>st</sup> ML Support?

---

85<sup>th</sup> Evacuation Hospital (Smb1) – All lab functions done

22<sup>nd</sup> Surgical Hospital (MASH)

18<sup>th</sup> Surgical Hospital (MASH)

2<sup>nd</sup> Surgical Hospital

616<sup>th</sup> Clearing Company

563<sup>rd</sup> Clearing Company

326<sup>th</sup> Medical Battalion, 101<sup>st</sup> Airborne Division

Dispensaries from the Army, Navy and Marine Corps.

---



# What Did The 1<sup>st</sup> Med Lab Accomplished in 16 Months?

Chemistry	9,654 Procedures
Urinalysis	7,263 Procedures
Hematology	22,535 Procedures
Microbiology	21,151 Procedures
Parasitology	29,348 Procedures
Serology	4,874 Procedures
Blood Banking	7,651 Units Processed
Histopathology (7 months)	2,355 Procedures

Period Oct 1968 to January 1970. Average Personnel Assigned = 15



Even Today Unit Members Will Tell  
You....

---

**#“PHU BAI WAS  
ALRIGHT”**

---



# THANKS...

---

- # To all the enlisted men of the 1<sup>st</sup> ML (Mbl) from October 1968 to January 1970 for their contributions which made the accomplishment of the mission possible. Without them, it would never have been realized.
  - # CPT James Higbee MSC, First Commander
  - # MAJ Peter Iber MSC, Last Commander
-